



little.
warriors

Little Warriors is partnered with researchers at the University of Alberta through the Department of Psychiatry to oversee and measure the outcomes of the Be Brave Ranch treatment program. We partnered with Greenspace for Measurement-Based Care to enable us to capture high-quality data from clients throughout treatment at the Be Brave Ranch.

This robust data helps inform clinical decision making, increase engagement and improve outcomes.

Greenspace Measurement-Based Care (MBC) enables us to measure and evaluate Little Warriors Be Brave Ranch clinical outcomes in:

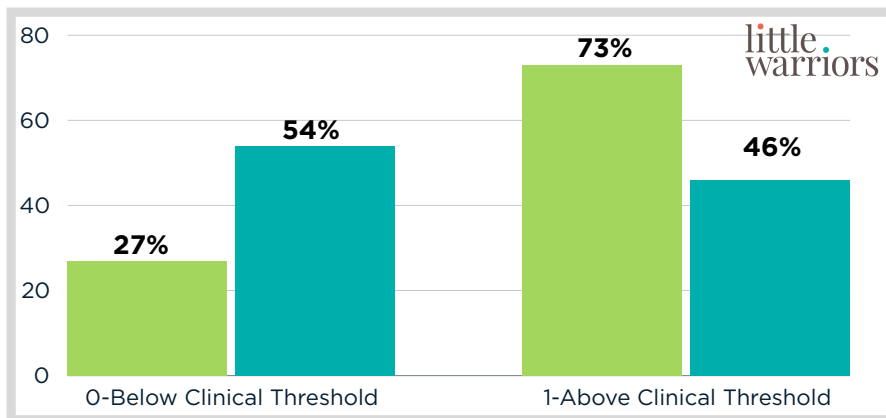
- **Depression**
- **Anxiety**
- **Child Anxiety & Depression**
- **Self Esteem**
- **Child PTSD**
- **Quality of Life**
- **Resilience**
- **Family Functioning**
- **Substance Use**



Child PTSD Overview

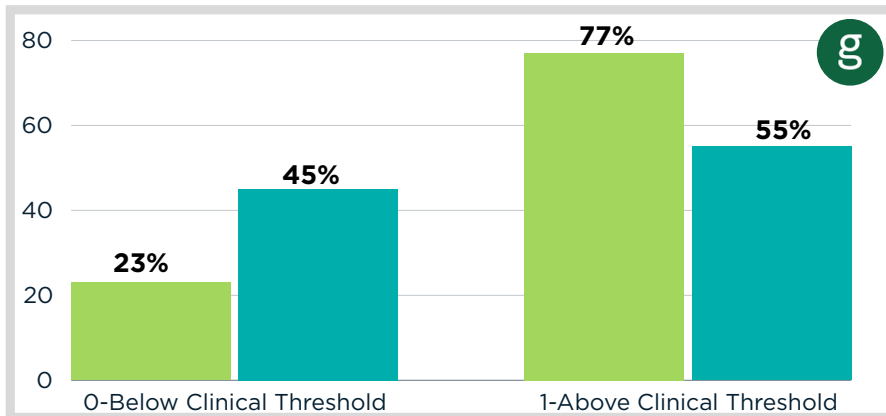
Comparison of average symptom severity between the first and most recently completed PHQ-9 assessment.

Symptom Severity Change



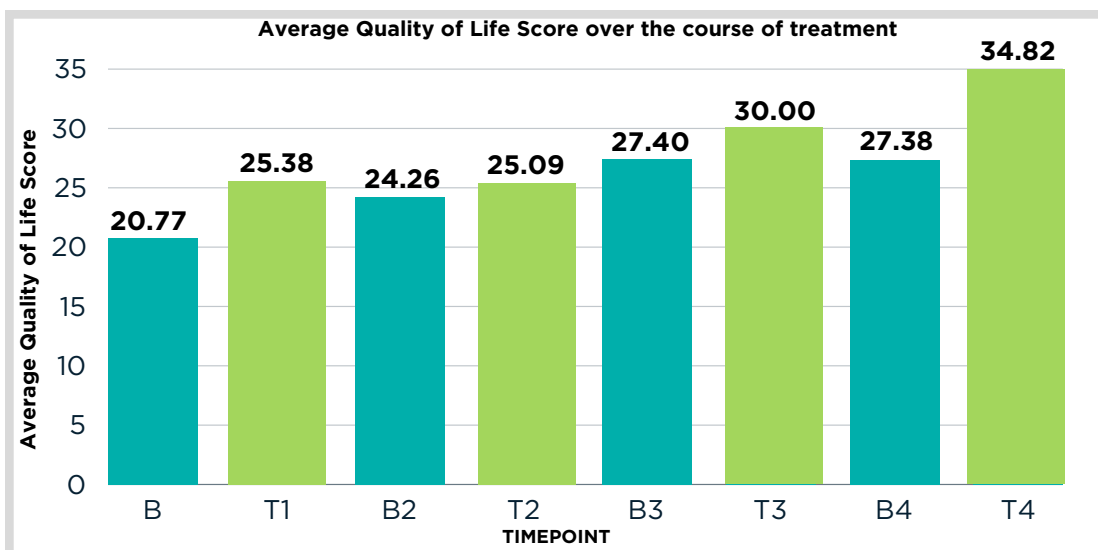
■ First Assessment
■ Most Recent Assessment

Little Warriors' clients improvements on the CPSS-5 are in line with other Canadian Institutions.



g Greenspace data from other Canadian Institutions

Quality of Life



Little Warriors measures quality of life using the KIDSCREEN-10. There is a clear improvement in quality of life during the treatment phases.

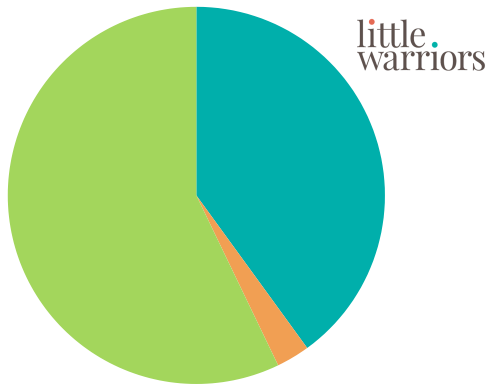
Legend:

B=Initial Admission; T1=Round 1 Discharge; B2=Round 2 Intake; T2=Round 2 Discharge; B3=Round 3 Intake; T3=Round 3 Discharge; B4=Round 4 Intake; T4=Graduation

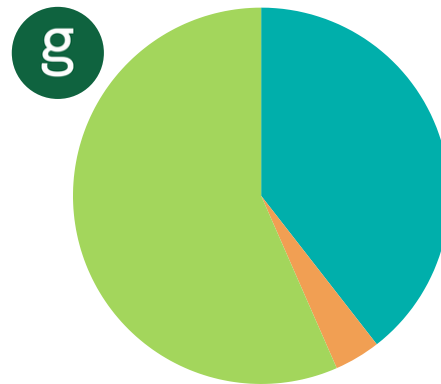
* Higher scores indicate greater quality of life

Depression PHQ-9 Overview

Little Warriors' Clients have a Reliable Improved Percentage for the PHQ-9 at par with that of other Canadian Mental Health Therapy Centres/Clinics.



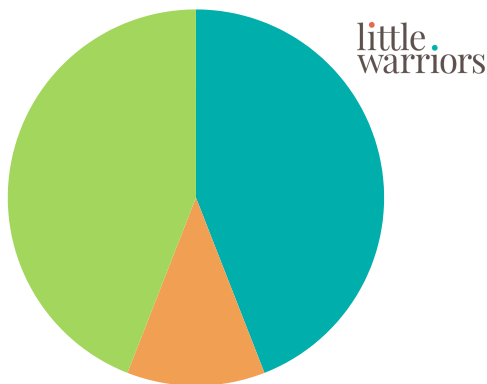
- Significant Improvement 40.00%
- No Improvement 2.86%
- Moderate Improvement 57.14%



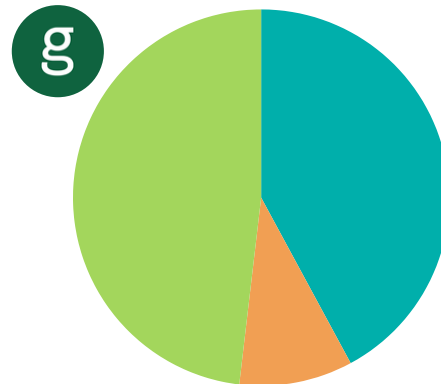
- Significant Improvement 39.47%
- No Improvement 3.95%
- Moderate Improvement 56.58%

Anxiety GAD-7 Overview

Little Warriors' Clients have a Reliable Improved Percentage for the GAD-7 Greater than that of other Canadian Mental Health Therapy Centres/Clinics.



- Significant Improvement 44.07%
- No Improvement 11.86%
- Moderate Improvement 44.07%

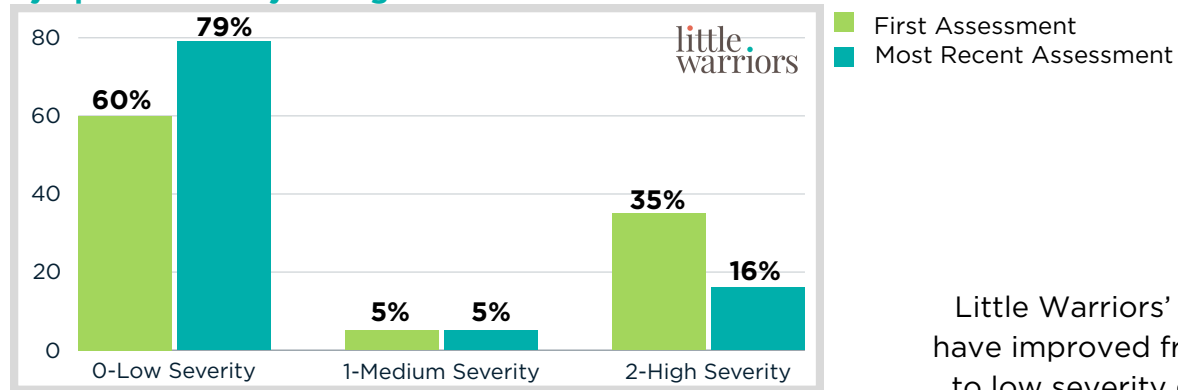


- Significant Improvement 42.11%
- No Improvement 9.75%
- Moderate Improvement 48.14%

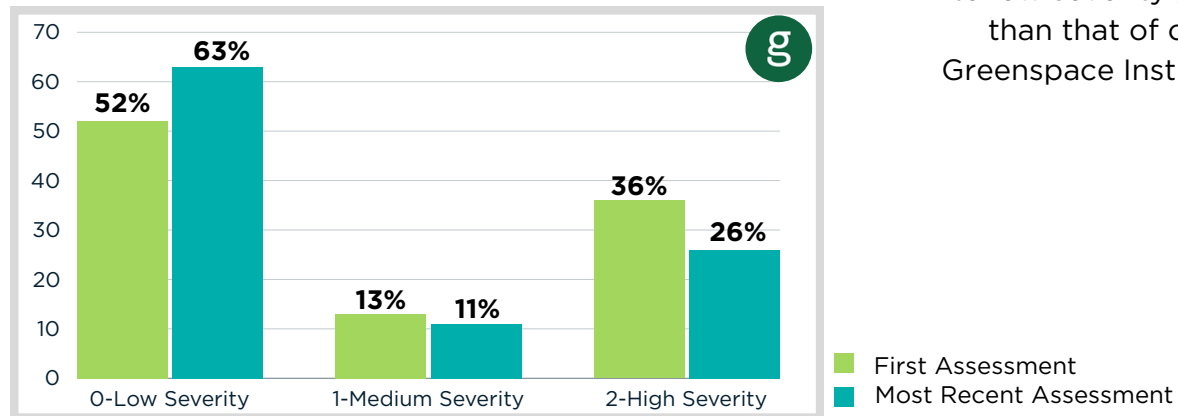


Child Anxiety & Depression Overview

Symptom Severity Change

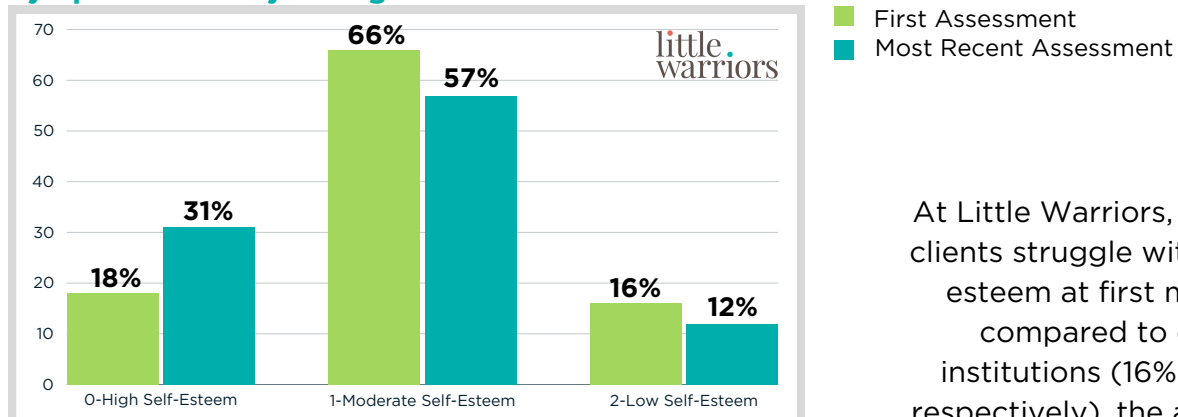


Little Warriors' Clients have improved from high to low severity greater than that of other Greenspace Institutions.



Self Esteem Overview

Symptom Severity Change



At Little Warriors, while less clients struggle with low self esteem at first measure compared to other institutions (16% vs 25%, respectively), the amount of clients with high self esteem at most recent assessment is higher. (31% vs 22%, respectively)

